

# HTS TO TERMINATOR AIR RESTRICTOR REMOVAL INSTRUCTION

<b>Part No.</b>	PA-160720-01 / PA210643 / PA210460	<b>Issue Date</b>	22-Feb-22
-----------------	------------------------------------	-------------------	-----------

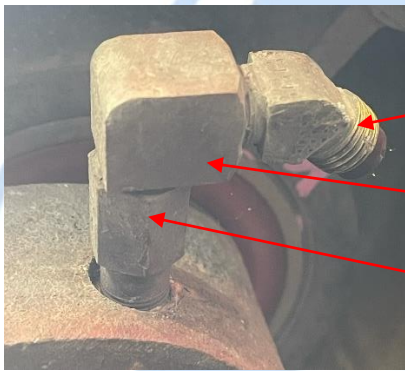
## Introduction:

This instruction covers the removal of an air flow restrictor on the Horton HTS fan clutch when replacing with an InnoTherm Terminator T1 or T2 fan clutch.

## Pre-Installation:

Safety guidelines and procedures outlined by your company must be followed, which should adhere to or exceed Federal or State approved shop safety practices and procedures.

## Removal of Air Restrictor



### 1. Remove existing brass fittings

Remove airline hose from brass elbow and remove can clutch from engine.

Remove brass elbow from straight nipple. (Note the JIC 45° fitting can remain fitted to the brass elbow.)

Remove straight fitting from clutch bracket



### 2. Remove restrictor

A small aluminium restrictor will be present inside the brass straight fitting that is fitted to the clutch.

The restrictor can be pushed out from other side with small piece of wire or nail if it does not easily fall out.

The aluminium restrictor is **NOT** required on any of the InnoTherm Terminator clutches. It can be discarded.

## Replacement of fittings to Terminator Clutch

### 3. Refit brass fittings to Terminator clutch

Apply Loctite 567 or equivalent to the straight brass piece. Fit to journal bracket.

Fit elbow (with JIC fitting) to straight brass piece.

Ensure all fittings are tight.

Refit air supply to JIC fitting.